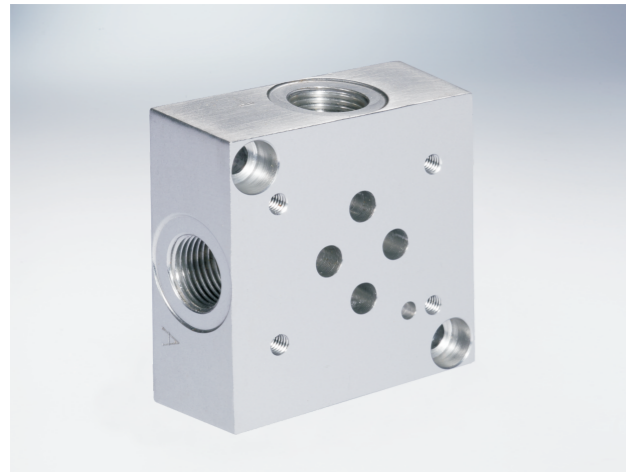


# 标准油路块 D03SP



## 型号说明

HY\* D03 SP \* \* / 10

A 铝 7A04 最高压力20.7MPa  
D 钢 45# 最高压力31.5MPa

设计序列号

6通径

过渡块

油口位置  
S 侧面油口  
B 底面油口

油口螺纹					
4P	1/4"NPT(Z)				
6P	3/8"NPT(Z)	8P	1/2"NPT(Z)	12P	3/4"NPT(Z)
6S	SAE-6	8S	SAE-8	12S	SAE-12
6B	3/8"BSP(G)	8B	1/2"BSP(G)	12B	3/4"BSP(G)
6M	M14X1.5	8M	M18X1.5	12M	M27X2

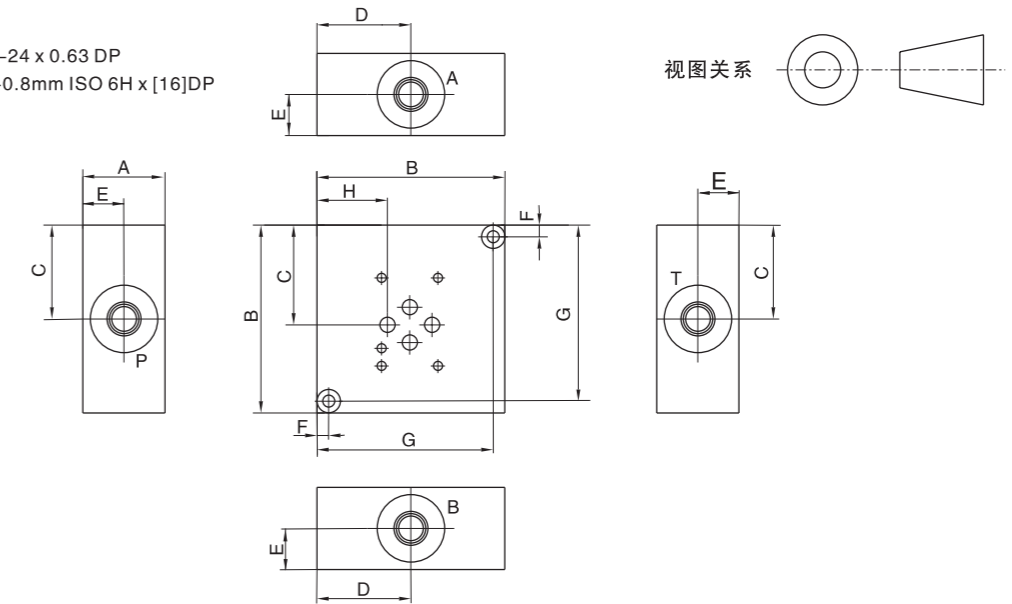
# 标准油路块 D03SP

## 外形尺寸

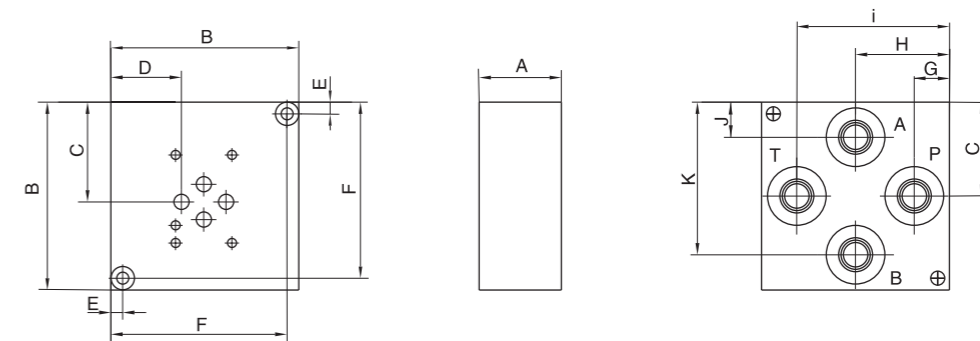
旁路油口过渡块

阀安装螺纹:美制#10-24 x 0.63 DP

公制 M5-0.8mm ISO 6H x [16]DP



尺寸	A	B	C	D	E	F	G	H
*D03SPS4P	1.00	2.50	1.31	1.25	0.50	0.25	2.25	0.88
*D03SPS6*	[25.4]	[63.5]	[33.3]	[31.8]	[12.7]	[6.4]	[57.2]	[22.4]
*D03SPS8*	1.50	3.50	1.81	1.78	0.75	0.25	3.25	1.38
	[38.1]	[88.9]	[46.0]	[45.2]	[19.1]	[6.4]	[82.6]	[34.9]
*D03SPS12*	1.75	4.00	2.06	2.03	0.88	0.38	3.63	1.63
	[44.5]	[101.6]	[52.4]	[51.6]	[22.4]	[9.5]	[92.1]	[41.3]



尺寸	A	B	C	D	E	F	G	H	I	J	K
*D03SPB4P	1.00	2.50	1.31	0.88	0.25	2.25	0.66	1.28	1.91	0.75	1.88
	[25.4]	[63.5]	[33.3]	[22.4]	[6.4]	[57.2]	[16.7]	[32.5]	[48.4]	[19.1]	[47.6]
*D03SPB6B	1.00	2.50	1.25	0.84	0.25	2.25	0.51	1.25	1.98	0.52	1.97
	[25.4]	[63.5]	[31.8]	[21.4]	[6.4]	[57.2]	[13.0]	[31.8]	[50.4]	[13.2]	[50.0]
*D03SPB6[M,P,S,T]	1.00	2.50	1.31	0.88	0.25	2.25	0.59	1.28	1.97	0.69	1.94
	[25.4]	[63.5]	[33.3]	[22.4]	[6.4]	[57.2]	[15.1]	[32.5]	[50.0]	[17.5]	[49.2]
*D03SPB8*	1.50	3.50	1.81	1.38	0.25	3.25	0.69	1.78	2.81	0.75	2.81
	[38.1]	[88.9]	[46.0]	[34.9]	[6.4]	[82.6]	[17.5]	[45.2]	[71.4]	[19.1]	[71.4]
*D03SPB12*	1.50	4.50	2.31	1.88	0.38	4.13	0.94	2.28	3.56	0.94	3.56
	[38.1]	[114.3]	[58.8]	[47.6]	[9.5]	[104.8]	[23.8]	[57.9]	[90.5]	[23.8]	[90.5]